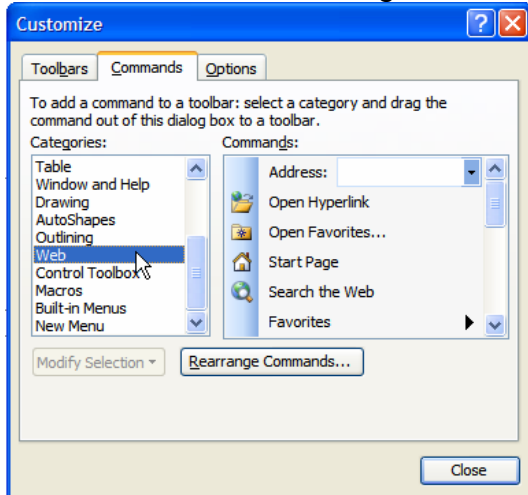


Adding a link to the Color Contrast Calculator to your PowerPoint toolbar

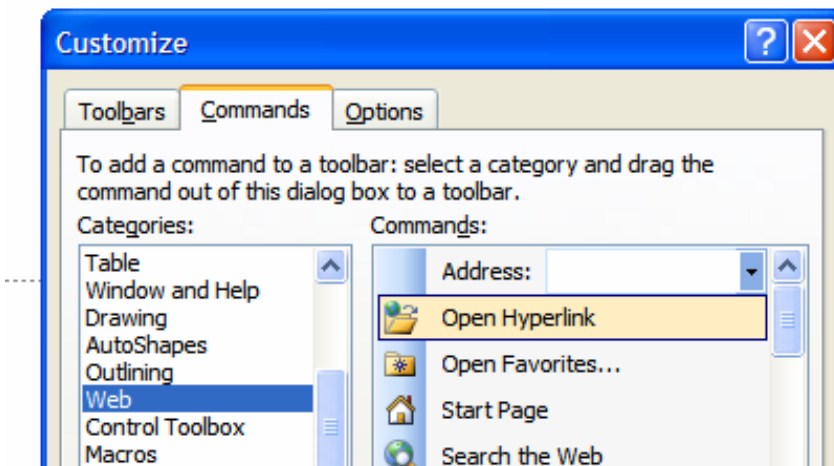
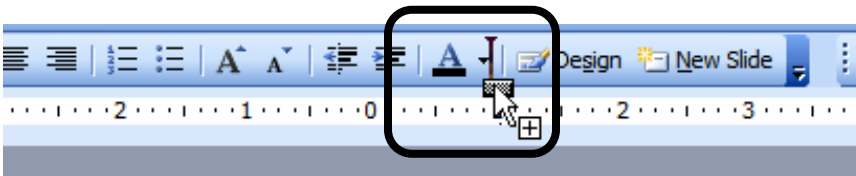
In order to make it easier to use the Color Contrast Calculator at www.ThinkOutsideTheSlide.com, the following instructions will show you how to add a button on your PowerPoint toolbar that allows you to open the calculator on the web with one click.

In PowerPoint:

- Click Tools → Customize
- Click on the Commands tab in the dialog box
- Scroll down the list of categories and click on the Web category



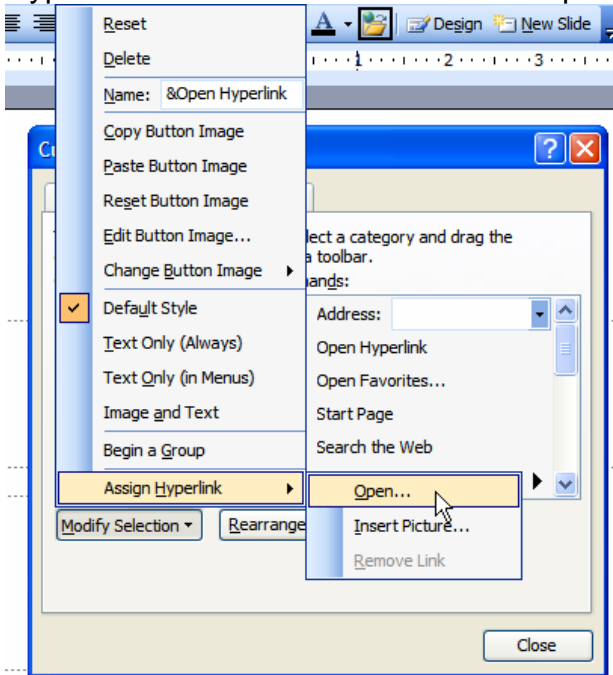
- Click on the Open Hyperlink command in the list of command and drag it up to the right side of the color selection toolbar button



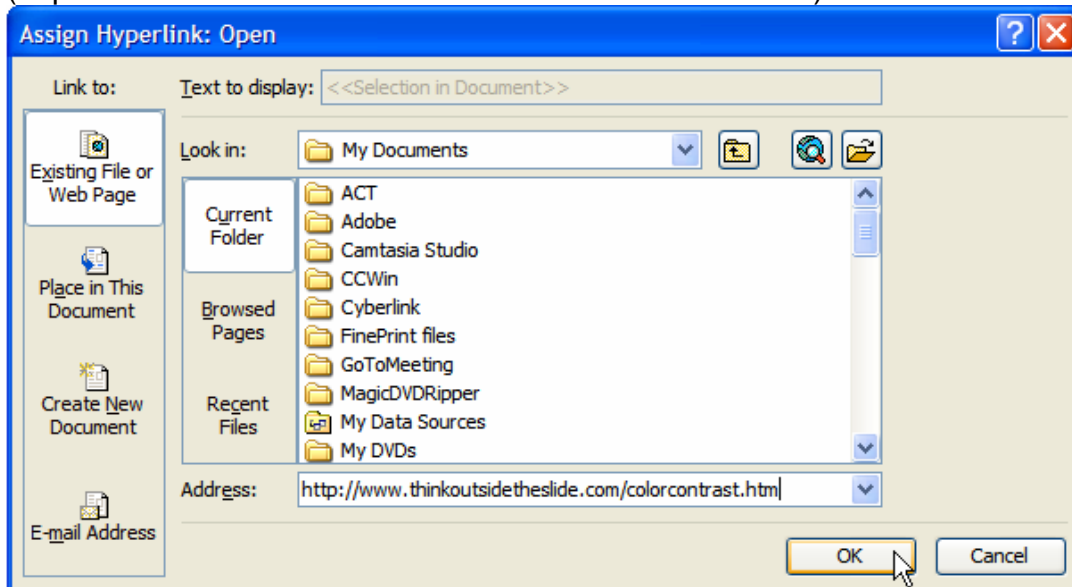
Make sure that you see the black I-beam indicating that the button will be placed beside the color selection button. The plus sign(+) beside the arrow cursor also indicates that the button will be added. Release your mouse button to drop the button on the toolbar.

- The new button will now have a black square around it indicating it has been selected.

- Click on the Modify Selection button in the Customize dialog box. Click on the Assign Hyperlink menu item and click on the Open sub-menu option.



- Enter the Color Contrast Calculator web address in the dialog box (<http://www.ThinkOutsideTheSlide.com/colorcontrast.htm>) and click OK.



- Click Close in the Customize dialog box
- Your new toolbar button will now take you directly to the web based Color Contrast Calculator when you click on it.